

Measuring a Room

Measuring your room should be straight forward; here are some simple measuring tips below.

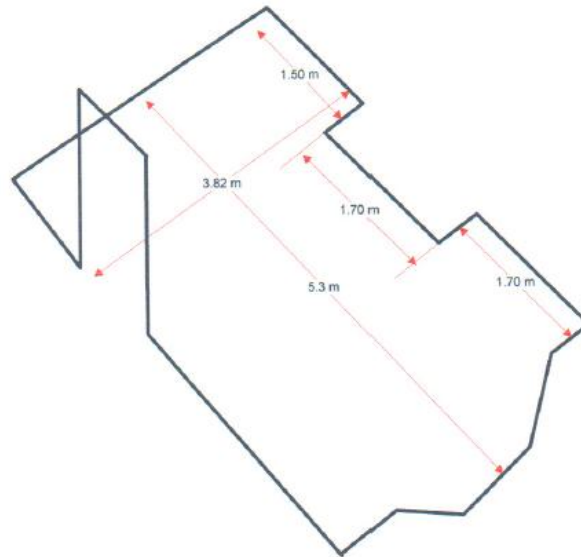
Before you start, you will need a metric tape measure, pen or pencil, paper and a calculator to hand.

Firstly draw a rough plan of the room showing all walls, now measure from the skirting board the longest part of the room, (Length) and then the widest point of the room. (Width)

(Remembering to measure into bay windows and door frames, and in Kitchens and utilities under the appliances as the Sheet Vinyl should cover the complete floor area and end directly under the door).

Add on an extra 5cm, to each measurement, just in case the walls run out and it also allows for cutting in when fitted then write these measurements on the plan.

Example Room



Most Sheet Vinyls are made 2 / 3 & 4 metres in width. Therefore once you have worked out the width of your room you will need to check that it is less than the width of the Sheet Vinyl you are looking to buy, to avoid any joins.

If your room does exceed the width of the Sheet Vinyl available, you will need to buy the length of the room twice by the width and use the second piece as a filler to give you the width required. The excess Sheet Vinyl not required for this room, may be big enough to cover another smaller room.

When ordering extra to make a filler, you should always ensure that you keep the flooring running in the same direction as the main piece to maintain the pattern and colour consistency.

(If you change the direction to save waste, then the pattern, will not match and this will be clearly visible)

How to measure for Sheet Vinyl

*Please note these are helpful tips and should not be confused as an installation guide. If in doubt we have a store network, that can offer professional help and advice, as well as measuring and fitting services.



*Another thing to consider when replacing any floorcovering is the total thickness of the new flooring being installed.

Is it higher than what is there at present?

If it is then you need to check the clearance under any doors as these may need to be trimmed before the new flooring is laid to ensure they open and close properly.